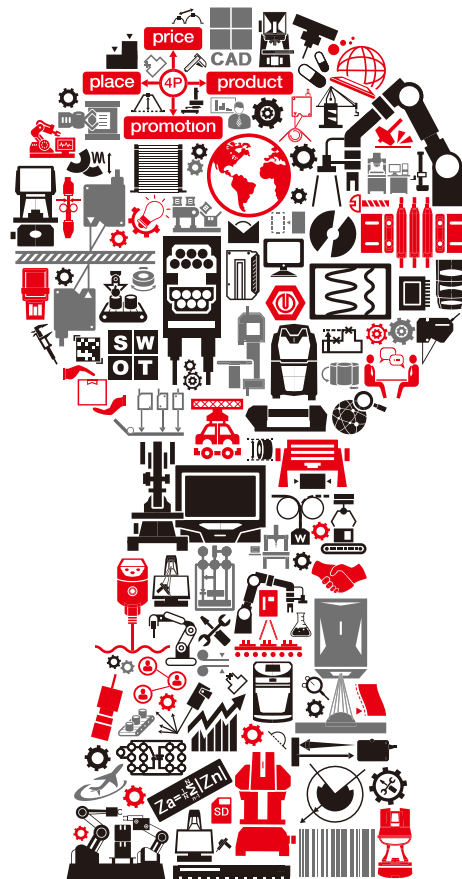




## CORPORATE PROFILE

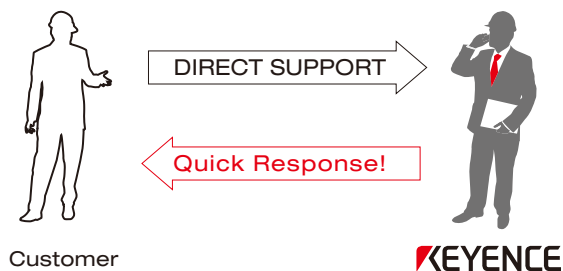


KEYENCE is dedicated to providing ADDED VALUE solutions for engineers in nearly all industries. We provide the tools that let manufacturers and researchers stay competitive in the global marketplace.

# KEYENCE VALUE

Since 1974, KEYENCE has steadily grown and innovated to become a world leader in the development of automation and quality assurance solutions

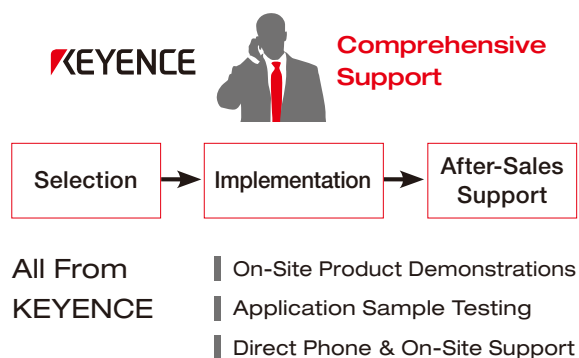
## Direct Sales Network



Your Sales Engineer

- Local
- Specialized Product Expert
- KEYENCE Direct

## Direct Support



## Same-Day Shipping



Products ordered by 4:00 PM CST are shipped from our warehouse center in Chicago the same day!

# Innovative Products



## NEW Products

### Hybrid Laser Marker



#### X, Y and Z Tracking

Combines a camera and distance sensor to adjust for X, Y, Z and  $\theta$ .

#### Data-Driven Analytics

Automatic fault protection and monitoring with intuitive diagnostics.

### Logistics Code Reader



#### Wide Field of View & Long Reading Depth

Read with certainty regardless of size or shape of objects.

#### Ultra-High Speed

Stable reading even on high-speed lines.

### 3D Surface Profiler



#### Measure Any Target

Nanometer, micrometer, and millimeter measurements on any material.

#### Unprecedented Surface Analysis

Automatic comparison of 42 roughness parameters to instantly differentiate samples.

# Presence Sensors



## All-Purpose Sensors

- | Best Detection Ability in its Class
- | Durable & Long Life
- | Simplified Operation

The LR-Z Series has become the standard for both machine builders and product manufacturers. This sensor series quickly solves any application with its long range and ability to detect shiny targets, dark targets, transparent targets, and everything in between.

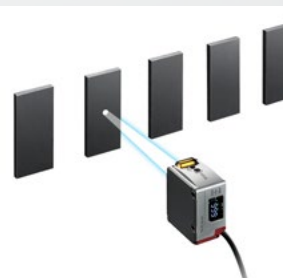
## Laser Sensors

The LR-T Series offers unmatched versatility with its laser light source, long range detection, all-in-one design, and OLED display.



## Color/Finish Sensors

Color, surface finish, and countless other appearance changes can be stably detected with the innovative LR-W Series.



## Fiber Optic Sensors

The FS-N40 Series boasts an easy-to-use amplifier and an extensive catalog of fiber optic heads to solve any application.



## Photoelectric Sensors

The PR Series offers a variety of durable metal sensors from miniature background suppression sensors to long distance thru-beams.





# Process Monitoring

## Flow Meters

- Clamp-On Flow Meters
- Monitor Liquids, Gases, or Compressed Air
- Compatible with Various Pipe Materials

KEYENCE offers a wide range of flow meters/sensors to fit any need. From low flow or air leakage monitoring, all the way up to monitoring compressed air or liquid flow on an 8" pipe, the FD Series provides effortless integration with its zero pipe modification clamp-on units.



## Pressure Sensors

- Measure Both Gas and Liquid Pressure
- Self-Contained and Separate Amplifier Models
- Highly-Visible Displays



## Level Sensors

- Unaffected by Foam, Vapor, Build-Up, etc.
- Standard, Sanitary, and Chemical Resistant Models
- Sensing Guide-Pulse Technology



# Machine Guarding



## Safety Laser Scanners

- | Impressive Range of 8.4 m (27.56')
- | Easy-To-Use Software
- | Built-In Camera

The SZ-V Series is the industry's leading safety laser scanner with its impressive range, detachable display, built-in camera, and network compatibility. This flexible safety solution makes machine guarding easier than ever before.

## Safety Light Curtains

- | Built-In Guarding
- | Quick and Easy Alignment
- | Simplified Wiring Options



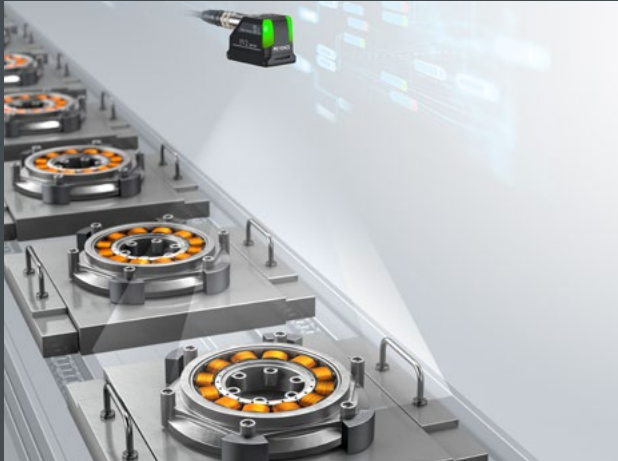
## Safety Door Interlocks

- | Locking and Non-Contact Models
- | Compact yet Robust Construction
- | Reliable and Consistent Alignment



# Pass/Fail Inspections

## Vision Sensors



Eliminate false detections due to external factors like oil stains, ambient lighting, and more.



Ignore oil on part

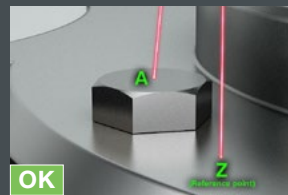


Ignore glare or lighting changes

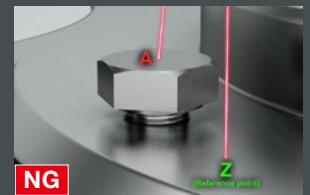
## Image-Based Laser Sensors



Determine correct target height and seating even if your product rotates, tilts, or has low contrast.



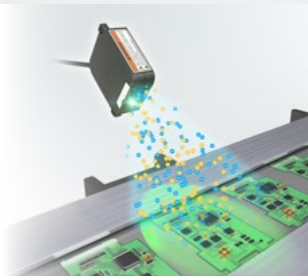
OK



NG

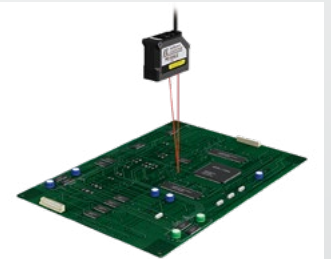
## Static Eliminators

Eliminate problems such as particle adhesion, electrostatic discharge, and operators receiving shocks. Automatic setup with clear visual indication of static elimination.



## Laser Position Sensors

Confirm and measure position, regardless of the target's color or finish.



## Contact Sensors

Rugged contact probes that last over 200 million cycles in tough environments.



## Pattern-Matching Sensors

Area-based presence/absence and pattern matching with a visual display.





# Code Readers



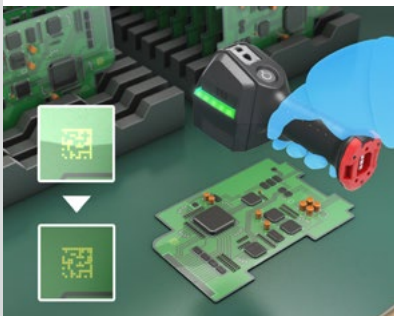
## 1D/2D Code Readers

- | Industry-Leading Barcode Reading Performance
- | Traceability Solutions for Every Industry
- | Simple and Intuitive Setup

KEYENCE is dedicated to providing solutions for traceability and product management. A full line of 1D and 2D code readers, along with dedicated control and communication devices, ensure complete and reliable solutions for every industry including logistics, automotive, and food and packaging.

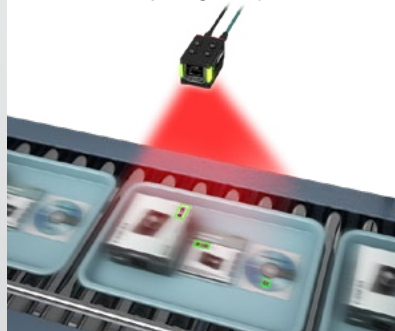
### Handheld

Challenges with conventional handheld code readers, such as difficult setup and slow, unstable operation are overcome by the SR-G100 Series innovative design and decoding engine. Activating automatic setup ensures that even challenging direct part marked codes are read quickly and reliably.



### Fixed Mount

With just the push of a button, SR Series code readers automatically find the optimal focus, lighting, and decoding parameters to ensure stable operation on even the most difficult codes. Easily reads codes at high speeds, long ranges, and varying heights without requiring readjustment.



### Mobile Computer

The BT-A Series is the newest product in the line-up, offering instant reading of near and far codes, now available on the Android™ operating system. The BT-A Series of handheld mobile computer has a unique one-handed design, making it the ultimate device for improving work efficiency.





# Laser Markers / Continuous Inkjet Printers

## Laser Markers

- Fiber, Hybrid, UV, Green, and CO<sub>2</sub> models
- Built-in Multi-Function Camera
- Maintenance-Free
- Up to 4x the Normal Expected Laser Life

KEYENCE's diverse collection of laser markers can overcome nearly any application. The new MD-X2 series takes marking technology even further by offering built-in vision, full-field autofocus and data-driven analytics.

### Common Applications



Automotive Parts



PC Boards



Instrument Switch Panels



Medical Devices



## Continuous Inkjet Printers

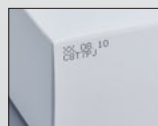
- Simple, Reliable, Predictable
- Automatic Self-Diagnosis and Cleaning
- Remote Operations and E-Mail Notifications
- IP Rated and Drop-Resistant Print Head

MK-G is the world's first self-troubleshooting continuous inkjet printer. Its ability to automatically perform diagnostics, self-cleaning and take corrective actions ensures a stable startup every time. This simplifies demanding inkjet maintenance tasks down to just the push of a button.

### Common Applications



Plastic bottles



Cartons



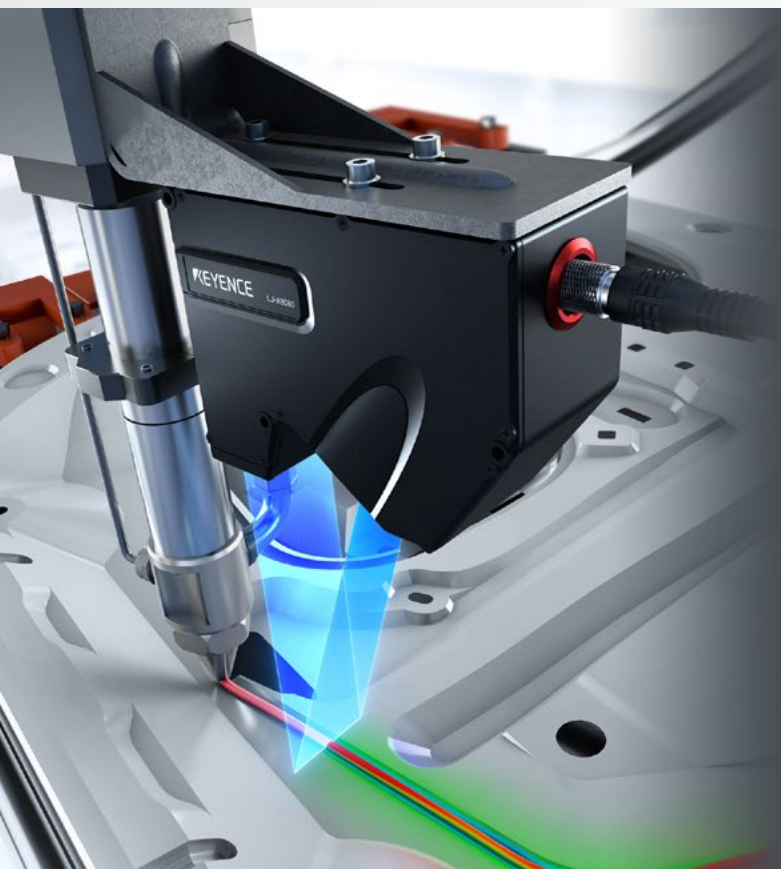
Packaging film



Pipes



# Measurement Sensors



## 2D & 3D Laser Profilers

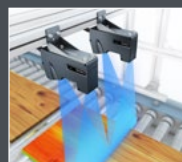
- | Measure
- | Inspect
- | Detect

2D/3D laser profilers provide a versatile solution for measurement and inspection of any material. These non-contact sensors are fast enough for inline use, and accurate enough for quality control.

### Common Applications



2D measurement



2D inspection

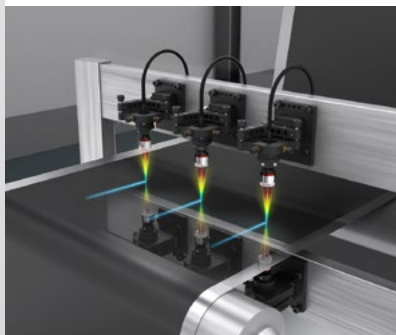


3D inspection

## Displacement Sensors

A complete lineup of confocal and triangulation sensors to fit any specification.

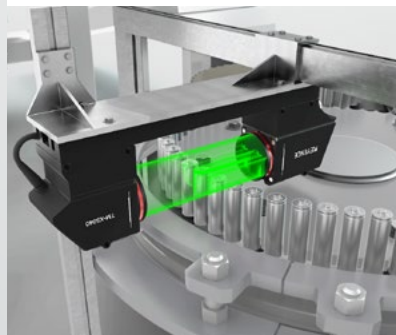
- | Position
- | Thickness
- | Height



## Optical Micrometers

1D and 2D micrometers to accurately measure any object within the beam.

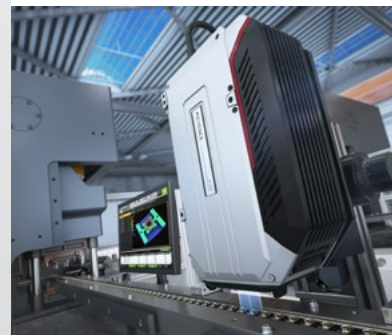
- | Diameter
- | Runout
- | Gap



## Interferometers

Realtime 3D measurements of small features for both inline and offline use.

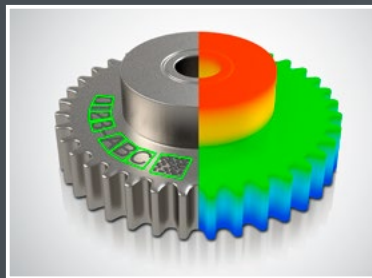
- | Flatness
- | Coplanarity
- | Volume



# Machine Vision Systems

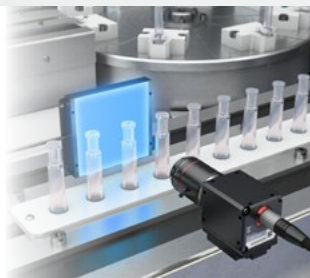
## World's Most Complete Vision Lineup

- High-Speed, Multi-Camera System
- Industry Leading NEW 64MP Camera to Cover Large Areas
- Small Cameras to Fit in Any Manufacturing Process
- 2D and 3D Inspection Capability



### Standard Vision Applications

Automate everyday inspection using established technology.



### Advanced Vision Applications

Solve challenging applications using state-of-the-art imaging technology with updated 3D cameras and inspection tools.



### Line Scan Technology

Ultra-high resolution cameras for large part, web, and continuous inspections.



### Vision-Guided Robotics

Perform pick-and-place functions using 2D guidance and unload bins of parts using 3D guidance.





# Microscopes & 3D Measurement Systems



## Digital Microscope

- | 4K Image Resolution
- | 20× Larger Depth-of-Field
- | Wide Range of Magnification up to 6000×

The VHX Series is the world's first 4K resolution imaging and measurement system that provides the highest level of image clarity and flexibility, while streamlining communication between every user.

## 3D Surface Profiler

The VK-X Series is designed to capture SEM-like images and perform nanometer-level profile, roughness, and film thickness measurements on any target, regardless of shape or material.



## Optical Profiler

The VR Optical Profiler measures profiles, contour, and flatness in as little as 1 second, without contacting the part.



## 3D Scanner

The VL 3D Scanner offers full 360° scanning with the ability to compare the part directly to its CAD model. Complex and freeform geometries can be easily and accurately measured.



## Fluorescence Microscope

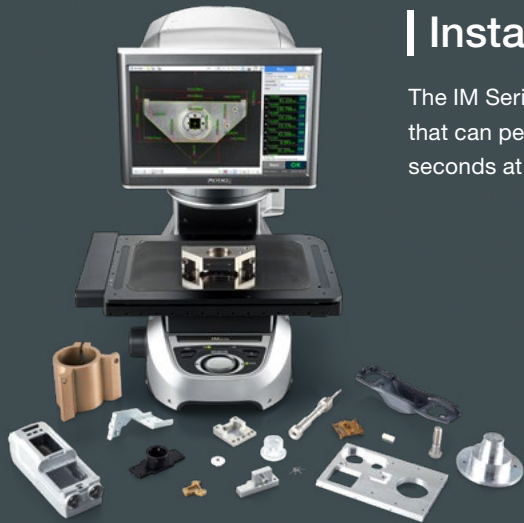
The BZ Series is an automated microscope for life science research capable of high-resolution imaging, live cell incubation, well plate screening, and quantification with a single platform.





# Metrology

## 2D Metrology



### | Instant Measurement System

The IM Series is an automated optical comparator that can perform hundreds of measurements in seconds at the push of a button.

### | High-Accuracy Measurement System

The LM Series is a high-accuracy measurement system that allows operators to achieve submicron-level accuracy.



## 3D Metrology



### | Handheld CMM

The XM Series is a portable, benchtop CMM designed to allow anyone to accurately measure 3D/GD&T features.

### | Wide-Area CMM

The WM Series allows users to easily measure up to 32 ft parts, or parts while they remain in the machine tool.





## Corporate Information

Global Headquarters: Osaka, Japan

Founded: May 1974

Capital: 281,078,000 USD

2020 Global Sales: 4,937,013,000 USD

Worldwide Employees: 8,380

Note: US dollar amounts are converted from Japanese yen for convenience only at 109 JPY = 1 USD, the approximate exchange rate on March 20, 2021.

## Global Network

230 Offices in 46 Countries

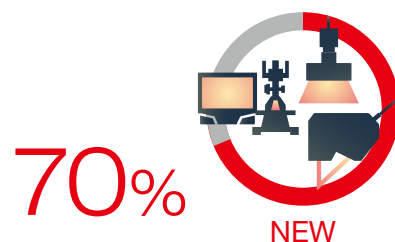


300,000+ Clients



Around the World

Products featuring  
World's First or Industry's  
First Technology

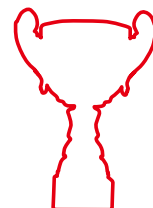


70%

NEW

Since 2011

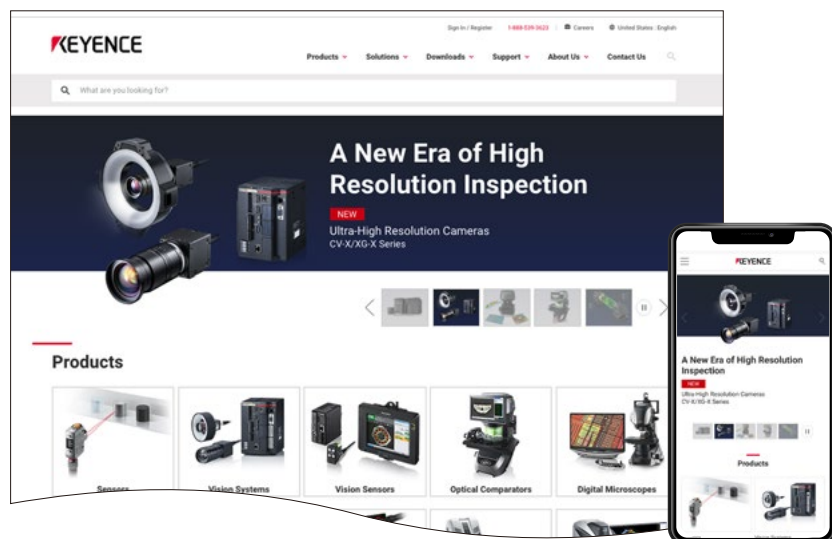
The World's Most Innovative  
Companies **Top 100** – Forbes



NEW

# Redesigned and Mobile Friendly

[www.keyence.com](http://www.keyence.com)



## Quick Registration



[www.keyence.com/quickreg](http://www.keyence.com/quickreg)

- Live Chat with Tech Experts
- Request Product Pricing
- Unlimited Access to Countless Resources

900+



### Technical Guides

Unlimited instant access to informative and detailed technical guides.

3000+



### Product Models

A full catalog of products with specs, manuals, software, and more.

25+



### Resource Sites

Complete knowledge-bases for specific industries, solutions and technologies.

35+



### Case Studies

A growing library of the stories behind how KEYENCE products create revolutionary solutions for customers.



CALL  
TOLL  
FREE

TO CONTACT YOUR LOCAL OFFICE  
**1-888-KEYENCE**  
1 - 8 8 8 - 5 3 9 - 3 6 2 3

[www.keyence.com](http://www.keyence.com)



### SAFETY INFORMATION

Please read the instruction manual carefully in order to safely operate any KEYENCE product.

CONTACT YOUR NEAREST OFFICE FOR RELEASE STATUS

#### KEYENCE CORPORATION OF AMERICA

**Head Office** 500 Park Boulevard, Suite 200, Itasca, IL 60143, U.S.A.

**PHONE:** +1-201-930-0100 **FAX:** +1-855-539-0123

**E-mail:** [keyence@keyence.com](mailto:keyence@keyence.com)

**AL** Birmingham

**CA** San Jose

**CO** Denver

**IL** Chicago

**MI** Detroit

**MO** St. Louis

**NC** Raleigh

**PA** Philadelphia

**TN** Nashville

**WA** Seattle

**AR** Little Rock

**CA** Cupertino

**FL** Tampa

**IN** Indianapolis

**MI** Grand Rapids

**NJ** Elmwood Park

**OH** Cincinnati

**PA** Pittsburgh

**TX** Austin

**WI** Milwaukee

**AZ** Phoenix

**CA** Los Angeles

**GA** Atlanta

**KY** Louisville

**MN** Minneapolis

**NY** Rochester

**OH** Cleveland

**SC** Greenville

**TX** Dallas

**UT** Salt Lake City

#### KEYENCE CANADA INC.

**Head Office** **PHONE:** +1-905-366-7655 **FAX:** +1-905-366-1122 **E-mail:** [keyencecanada@keyence.com](mailto:keyencecanada@keyence.com)

**Montreal** **PHONE:** +1-514-694-4740 **FAX:** +1-514-694-3206 **Windsor** **PHONE:** +1-905-366-7655 **FAX:** +1-905-366-1122

#### KEYENCE MEXICO S.A. DE C.V.

**PHONE:** +52-55-8850-0100 **FAX:** +52-81-8220-9097

**E-mail:** [keyencemexico@keyence.com](mailto:keyencemexico@keyence.com)

The information in this publication is based on KEYENCE's internal research/evaluation at the time of release and is subject to change without notice.

Company and product names mentioned in this catalog are either trademarks or registered trademarks of their respective companies.

The specifications are expressed in metric units. The English units have been converted from the original metric units. Unauthorized reproduction of this catalog is strictly prohibited.

Copyright © 2020 KEYENCE CORPORATION. All rights reserved.

KA1-1099

corporateprofile-KA-OT8-US 2071-2 611N39